

Installation Instructions

PBFT Tape Retrofit Kit (8 mm to 120 mm)

Purpose

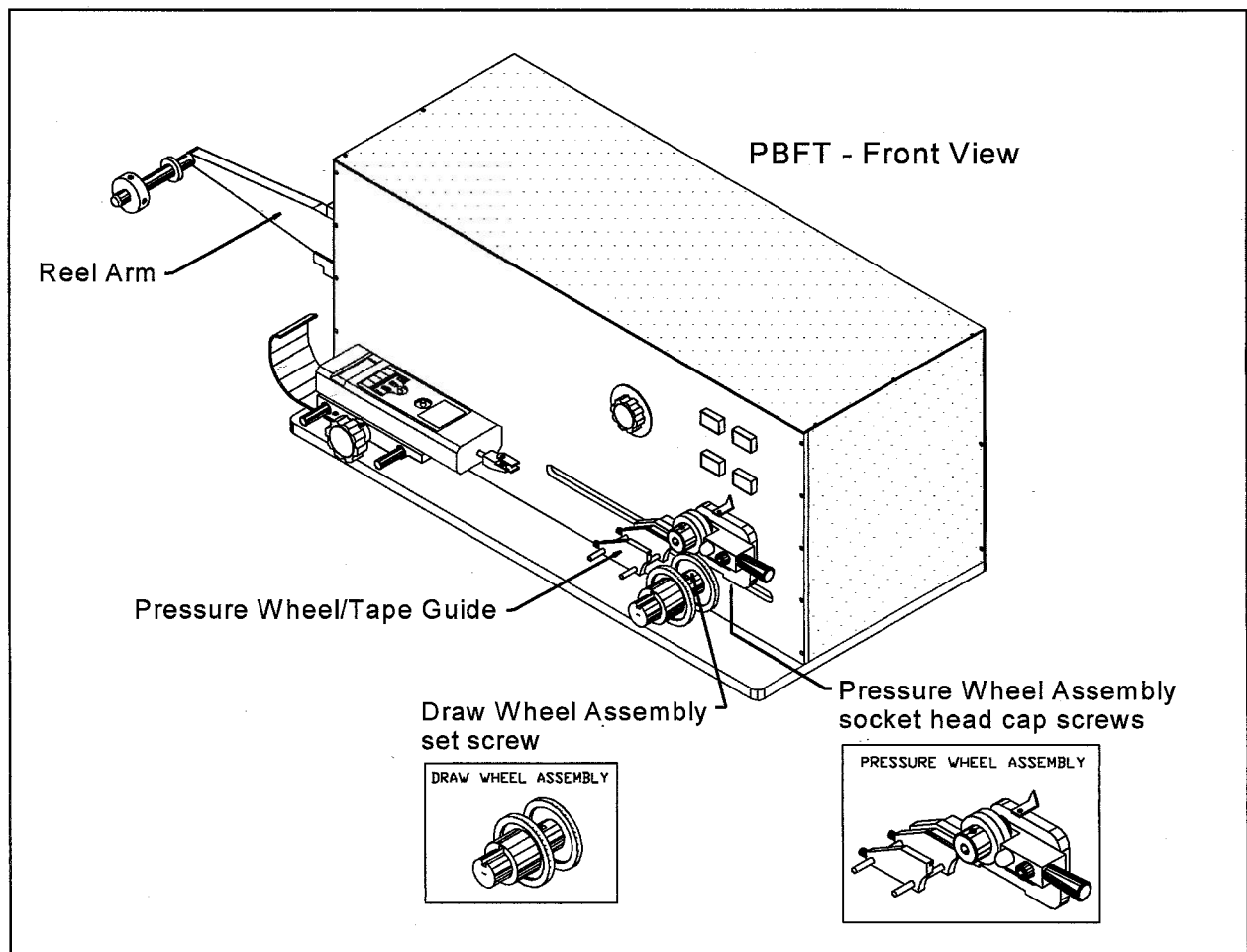
Use these instructions with GPD's PBFT Tape Retrofit Kit (8 mm to 120mm), Part No. PBT-109, to increase the range of tape widths a GPD PBFT can accommodate; increase the range from "8 mm to 56 mm" to "8 mm to 120 mm" tape widths.

Install Tape Retrofit Kit

To install the 8 mm to 120 mm Tape Retrofit Kit (P/N PBT-109) on the PBFT:

Remove "8 mm to 56 mm" Parts from PBFT

1. Remove the Draw Wheel Assembly by removing its set screw with a 5/64" hex wrench.
2. Remove the Pressure Wheel Assembly by removing its two 10-24 socket head screws with a 5/32" hex wrench.
3. Remove the Reel Arm by removing its two 10-32 socket head screws with a 5/32" hex wrench.

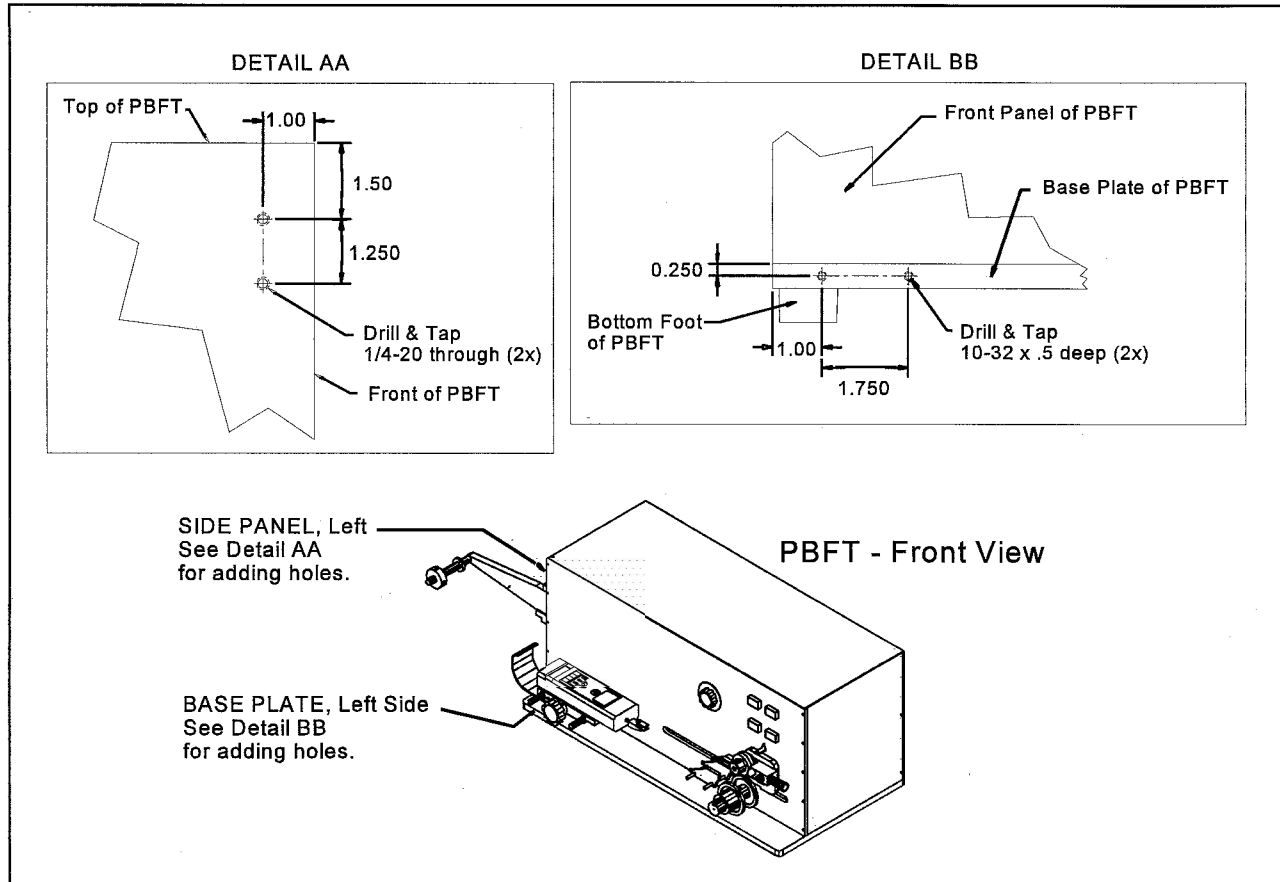


Prepare the PBFT for Installation of Retrofit Parts

1. On the left side panel of the PBFT, drill and tap two 1/4-20 holes as shown in diagram Detail AA for mounting the new reel arm assembly.

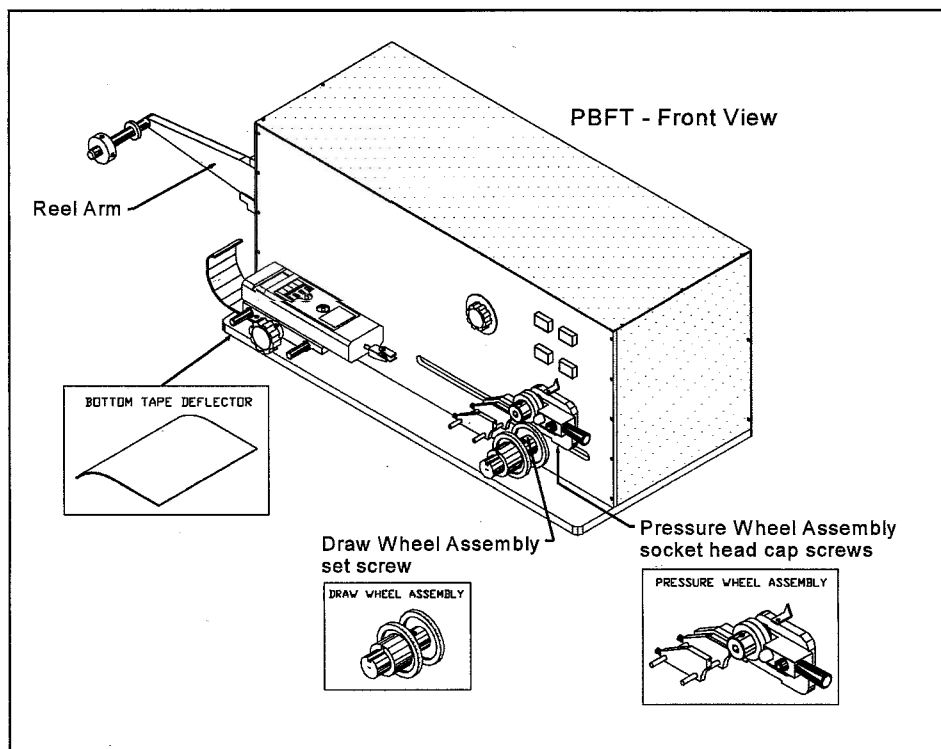
NOTE: Remove the wires and other components from behind the plate if needed.

2. On the left front face of the base plate, drill and tap two 10-32 holes as shown in diagram Detail BB for mounting the bottom tape deflector.



Reassemble PBFT with "8 mm to 120 mm" Parts

1. Bolt the bottom tape deflector below the top tape deflector using the two 10-32 x 3/8" long socket head cap screws supplied and a 5/32" hex wrench.
2. Bolt on the new reel arm using the two 1/4-20 x 5/8" long socket head cap screws supplied and a 3/16" hex wrench.
3. Bolt on the new pressure wheel assembly using the two 10-24 socket head cap screws supplied and a 5/32" hex wrench.



4. Bolt on the new draw wheel assembly using a 8-32 x 1/4" long set screw and a 5/64" hex wrench.

NOTE: Position the draw wheel assembly so the carrier tape will be parallel with the inner tape guide.

Replace Strain Gauge Adjustment Knob & Shaft

1. Remove power from the PBFT.
2. Remove the back cover from the PBFT.
3. Locate the strain gauge adjustment shaft inside the PBFT cabinet and remove the set collar and bronze thrust washer from it.
4. Unscrew the threaded shaft and screw in the longer threaded shaft supplied with the kit.
5. Reinstall the thrust washer and set collar on the new strain gauge adjustment shaft.
6. Reinstall the back cover.

